

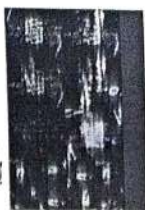
Mrudula K.
Keshava Reddy E.
Hitendra Sarma T.

Improvements over Fuzzy clustering methods for large Datasets

BP-105



LAMBERT
Academic Publishing

[Toggle navigation](#)Improvements over Fuzzy
clustering methods for Large
Datasets

Improvements over Fuzzy clustering methods for large Datasets

LAP Lambert Academic Publishing (2021-07-09)

€ 39,90

[Buy at the MoreBooks! Shop](#)

Fuzzy C-means and kernel FCM-F are multi scan methods and require NC distance computations where N is the size of the dataset D, C is the number of cluster centers in the data and Kernel FCM-K also is a multi scan method requiring NZC distance computations in each iteration. For large values of N, the overall computation cost will go on increasing for these methods. The Book proposed two-step prototype based hybrid techniques to speed-up FCM, KFCM-F and KFCM-K. The proposed algorithms are called Prototype based FCM (PFCM), Prototype based KFCM-F (PKFCM-F) and Prototype based KFCM-K (PKFCM-K). Initially, few prototypes are generated from the given dataset and later the conventional

[Back](#)

[We use cookies to enhance your experience. \[Learn More\]\(#\)](#)

I understood