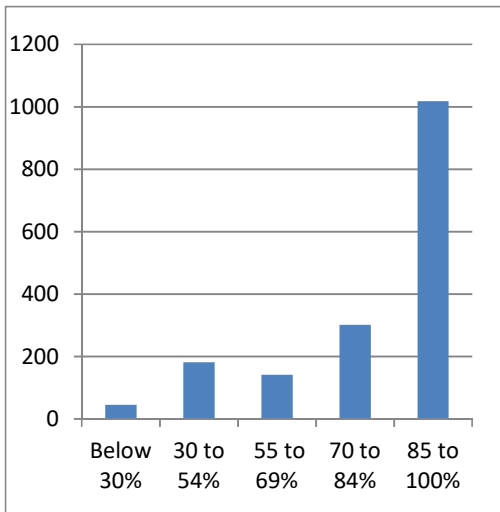


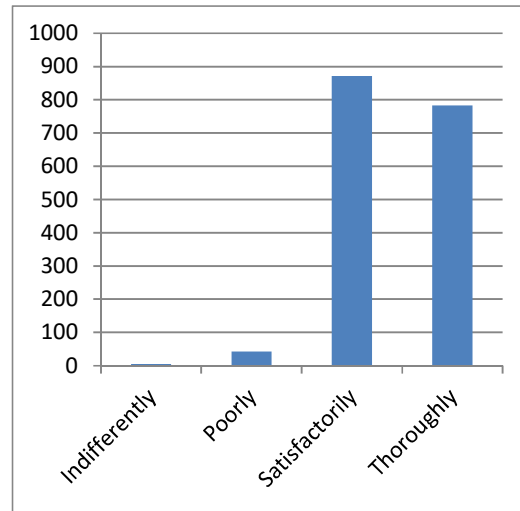
1

1. How much of the syllabus was covered in the class?	
Below 30%	45
30 to 54%	182
55 to 69%	142
70 to 84%	302
85 to 100%	1018

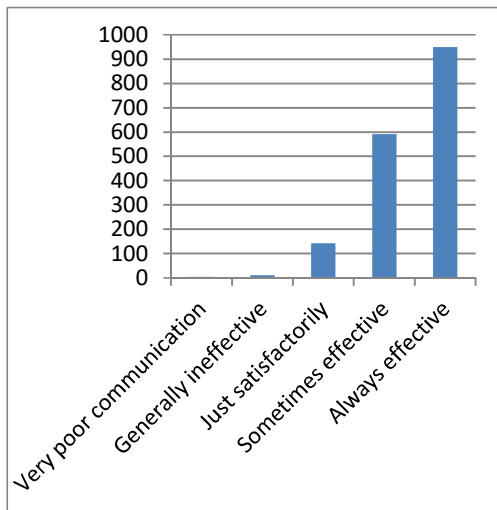


2

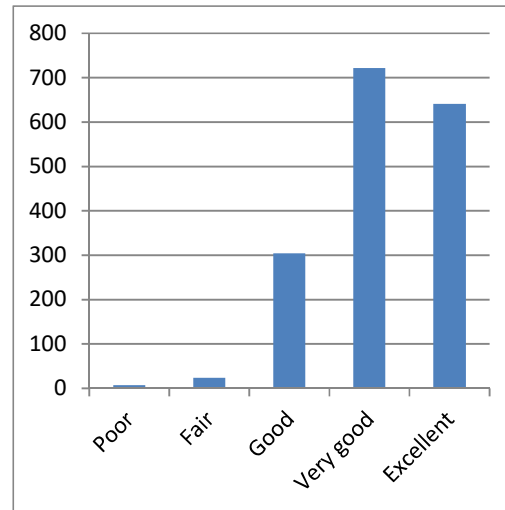
2. How well did the teachers prepare for the classes?	
Indifferently	5
Poorly	43
Satisfactorily	872
Thoroughly	783



3	
3. How well were the teachers able to communicate?	
Very poor communication	4
Generally ineffective	11
Just satisfactorily	142
Sometimes effective	591
Always effective	950

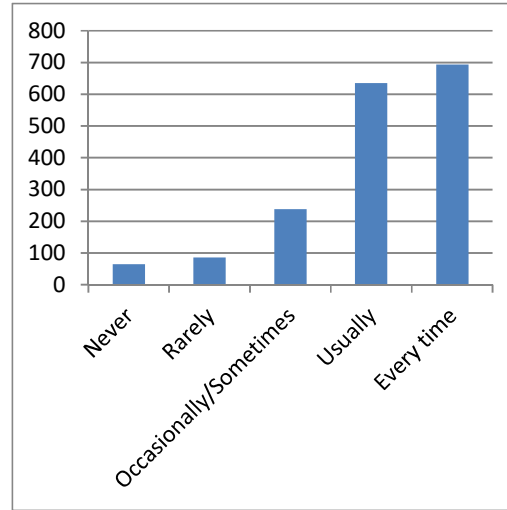
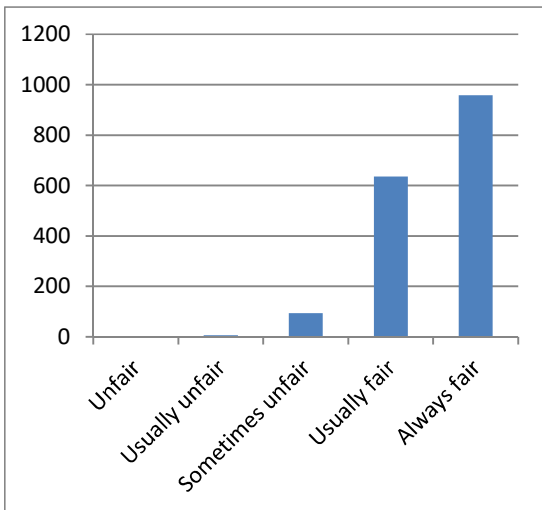


4	
4. The teacher's approach to teaching can best be described as	
Poor	7
Fair	24
Good	304
Very good	722
Excellent	641

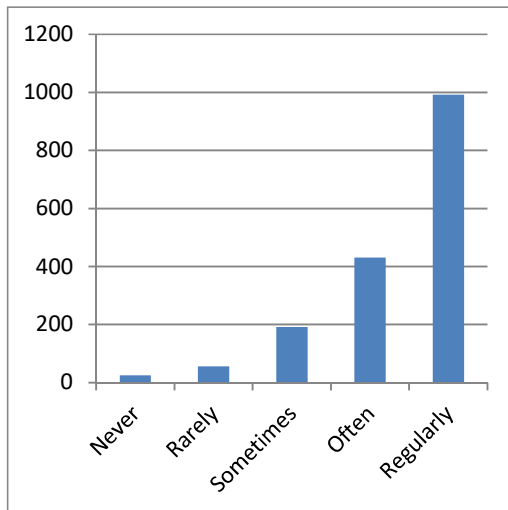


5	
5. Fairness of the internal evaluation process by the teachers.	
Unfair	1
Usually unfair	6
Sometimes unfair	94
Usually fair	636
Always fair	958

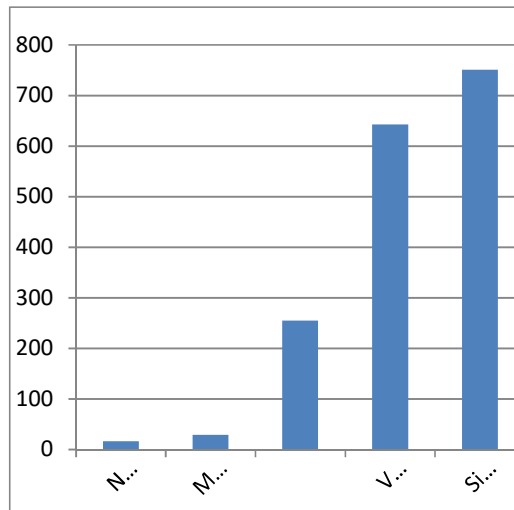
6	
6. Was your performance in assignments discussed with you?	
Never	65
Rarely	86
Occasionally/Sometimes	238
Usually	635
Every time	694



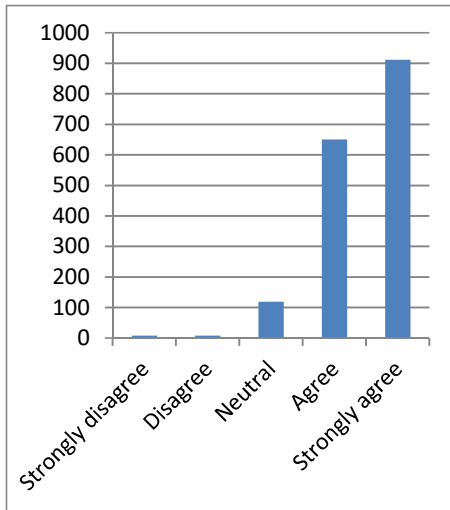
7	
7. The institute takes active interest in promoting internship, student exchange, field visit opportunities for students.	
Never	25
Rarely	56
Sometimes	192
Often	431
Regularly	992



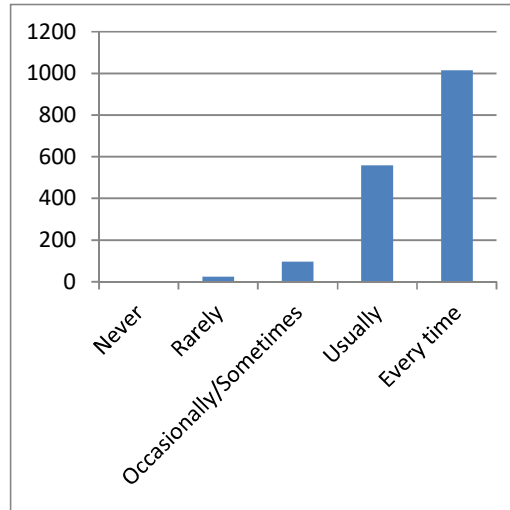
8	
8. The teaching and mentoring process in your institution facilitates you in cognitive, social and emotional growth.	
Not at all	16
Marginally	29
Moderately	255
Very well	643
Significantly	751



9	
9. The institution provides multiple opportunities to learn and grow.	
Strongly disagree	8
Disagree	8
Neutral	119
Agree	650
Strongly agree	912

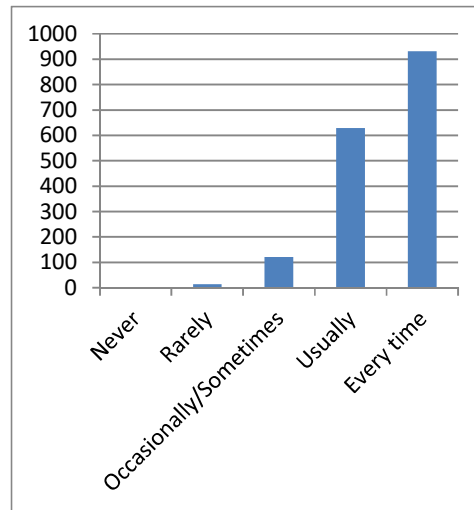
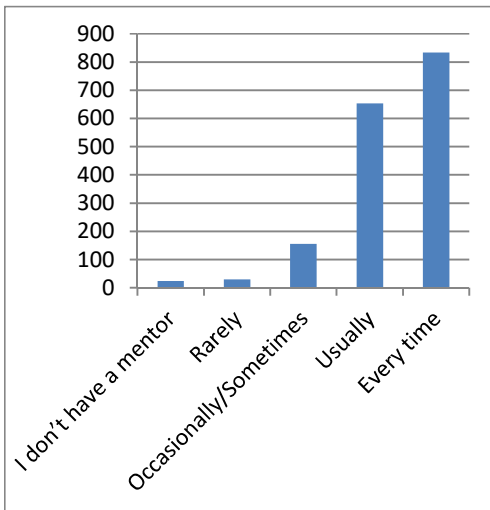


10	
10. Teachers inform you about your expected competencies, course outcomes and programme outcomes.	
Never	1
Rarely	25
Occasionally/Sometimes	96
Usually	559
Every time	1015



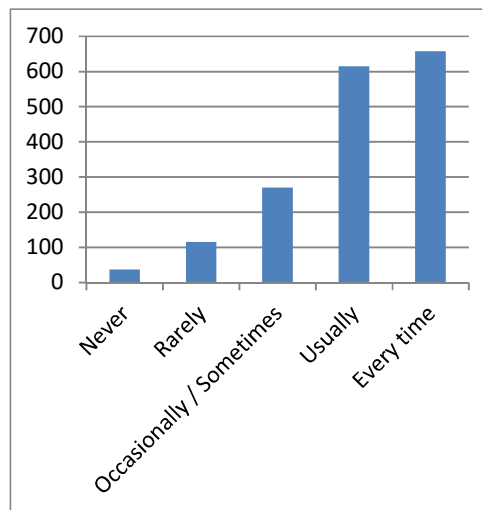
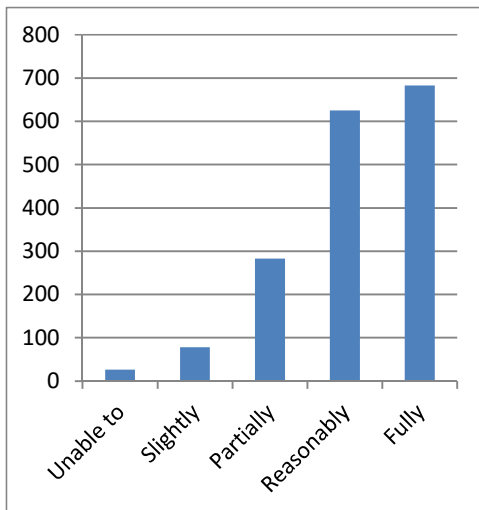
11	
11. Your mentor does a necessary follow-up with an assigned task to you.	
I don't have a mentor	24
Rarely	30
Occasionally/Sometimes	155
Usually	653
Every time	834

12	
12. The teachers illustrate the concepts through examples and applications.	
Never	2
Rarely	14
Occasionally/Sometimes	121
Usually	629
Every time	931



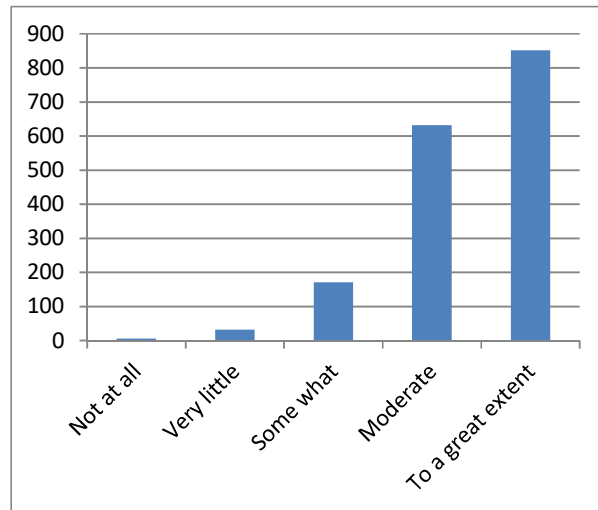
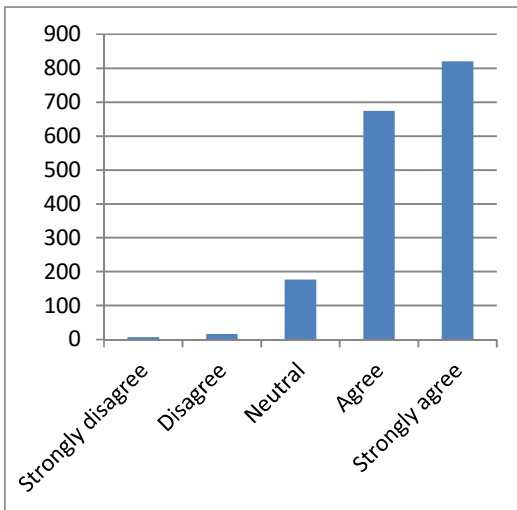
13	
13. The teachers identify your strengths and encourage you with providing right level of challenges.	
Unable to	26
Slightly	78
Partially	283
Reasonably	625
Fully	683

14	
14. Teachers are able to identify your weaknesses and help you to overcome them	
Never	37
Rarely	115
Occasionally / Sometimes	270
Usually	615
Every time	658



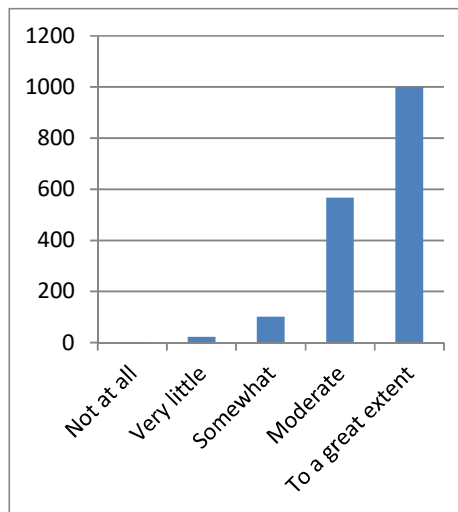
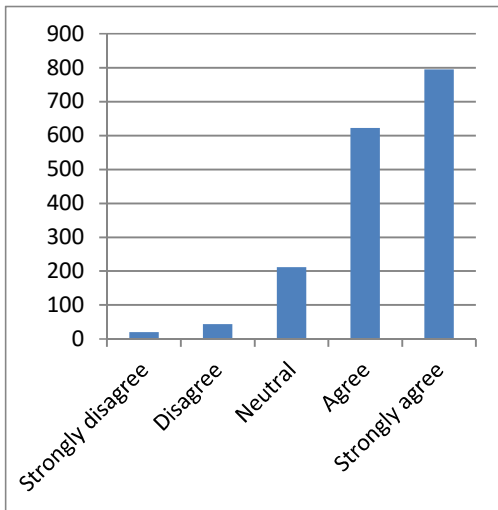
15	
15. The institution makes effort to engage students in the monitoring, review and continuous quality improvement of the teaching learning process.	
Strongly disagree	7
Disagree	16
Neutral	177
Agree	674
Strongly agree	820

16	
16. The institute/ teachers use student centric methods, such as experiential learning, participative learning and problem solving methodologies for enhancing learning experiences.	
Not at all	6
Very little	32
Some what	171
Moderate	632
To a great extent	852



17	
17. Teachers encourage you to participate in extracurricular activities.	
Strongly disagree	20
Disagree	44
Neutral	212
Agree	622
Strongly agree	795

18	
18. Efforts are made by the institute/ teachers to inculcate soft skills, life skills and employability skills to make you ready for the world of work.	
Not at all	3
Very little	23
Somewhat	101
Moderate	567
To a great extent	1000



19	
19. What percentage of teachers use ICT tools such as LCD projector, Multimedia, etc. while teaching.	
Below 29%	29
30 – 49%	50
50 – 69%	201
70 – 89%	578
Above 90%	835

20	
20. The overall quality of teaching-learning process in your institute is very good.	
Strongly disagree	2
Disagree	8
Neutral	148
Agree	661
Strongly agree	876

