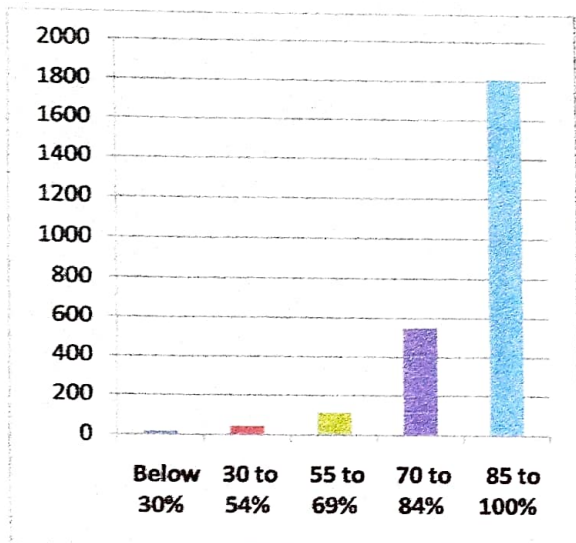




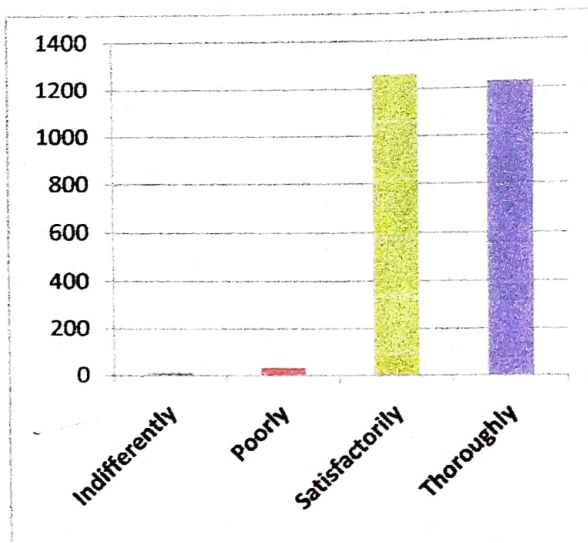
**G. NARAYANAMMA INSTITUTE OF TECHNOLOGY AND SCIENCE (For Women)
(AUTONOMOUS)**

SUMMARY OF STUDENT SATISFACTION SURVEY (A.Y. 2021-22)

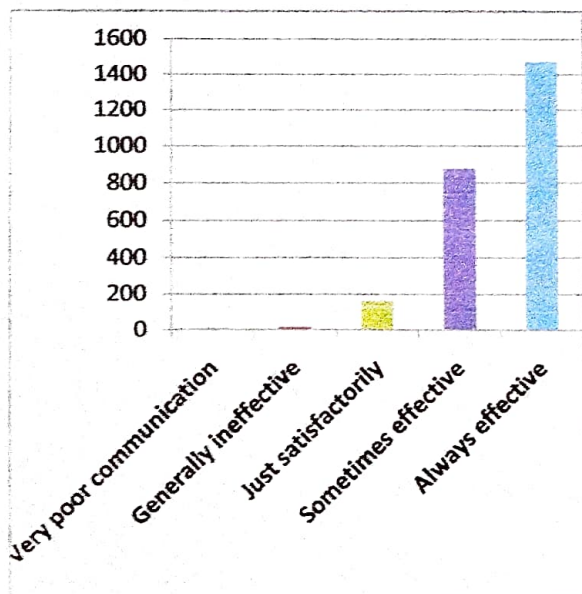
1. How much of the syllabus was covered in the classes?



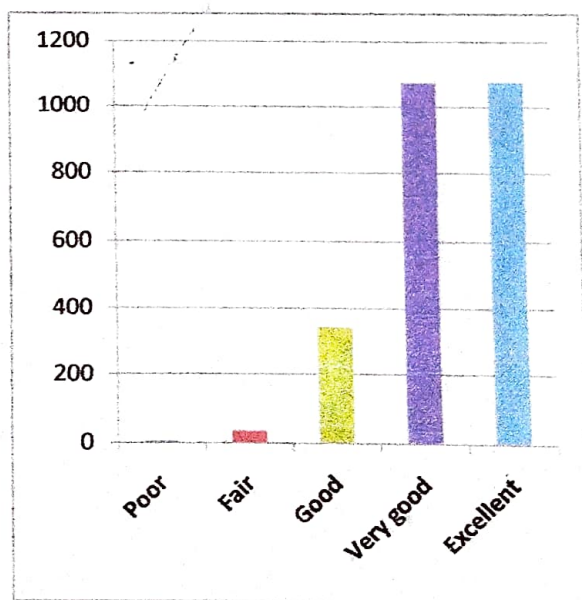
2. How well did the teachers prepare for the class?



3. How well were the teachers able to communicate?



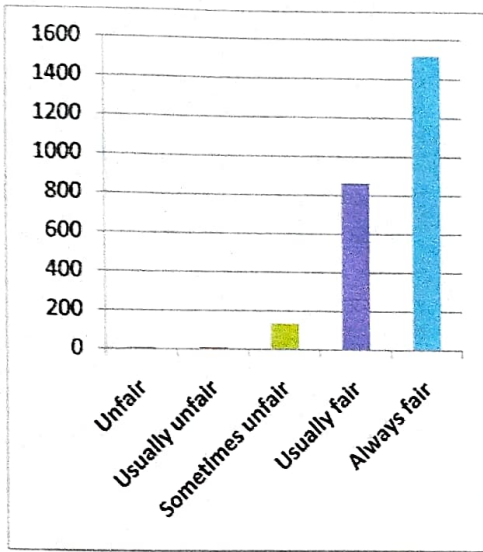
4. The teacher's approach to teaching can be best described as



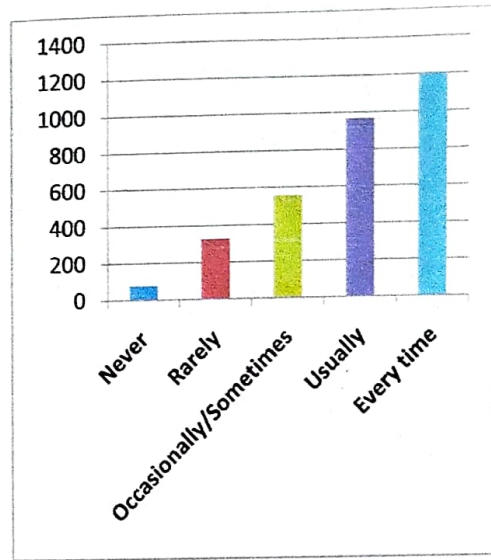
G. Anus
(Dr. G. Anusapurna)
Prof - EEE

[Signature]
PRINCIPAL
G. Narayanamma Institute of
Technology & Science (for women)
(AUTONOMOUS)
Shaikpet, Hyderabad - 500 104.

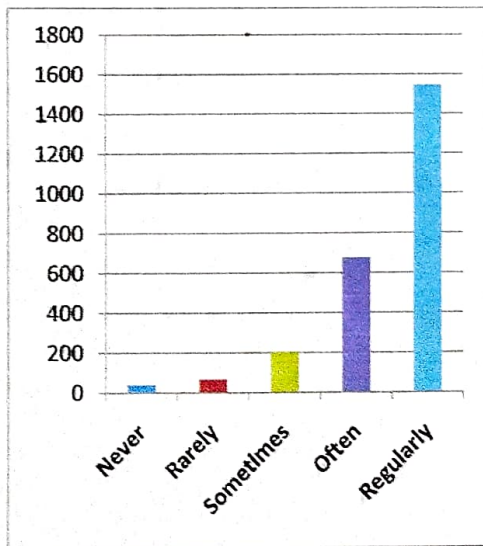
5. Fairness of the internal evaluation process by the teachers.



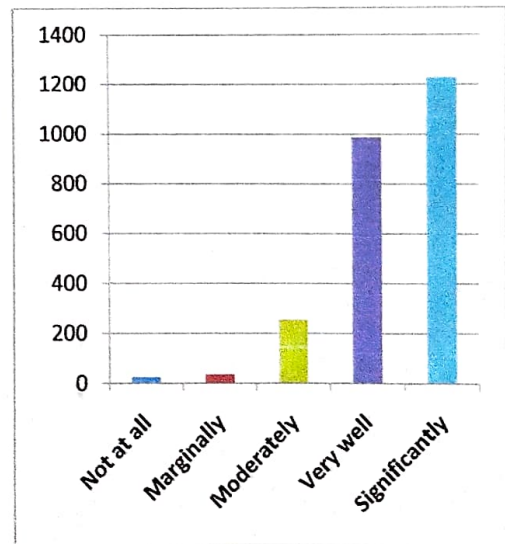
6. Was your performance in assignments discussed with you?



7. The institute takes active interest in promoting internship, student exchange, field visit opportunities for students.



8. The teaching and mentoring process in your institution facilitates you in cognitive, social and emotional growth.



G. Anur

(Dr. G. Anurupurna)

Prof - EEE

[Signature]
PRINCIPAL

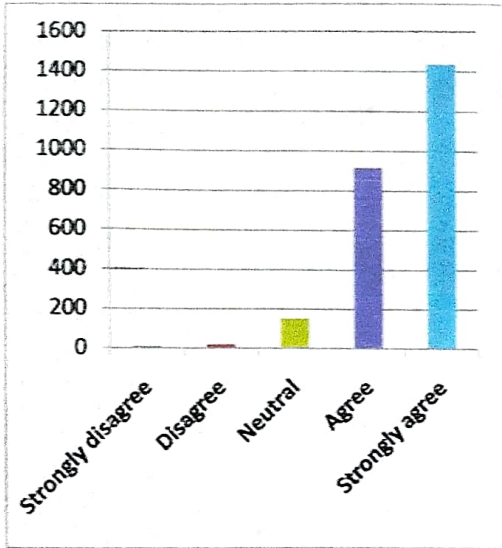
G. Narayanamma Institute of Technology & Science (for women) (AUTONOMOUS) Shaikpet, Hyderabad - 500 104

[Signature]

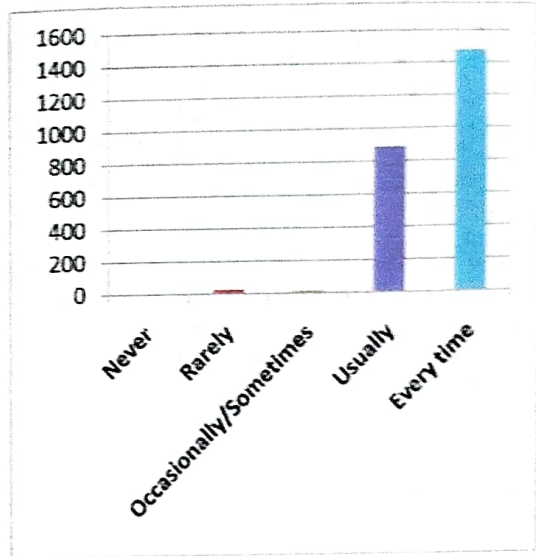
PRINCIPAL

G. Narayanamma Institute of Technology & Science (for women) (AUTONOMOUS) Shaikpet, Hyderabad - 500 104

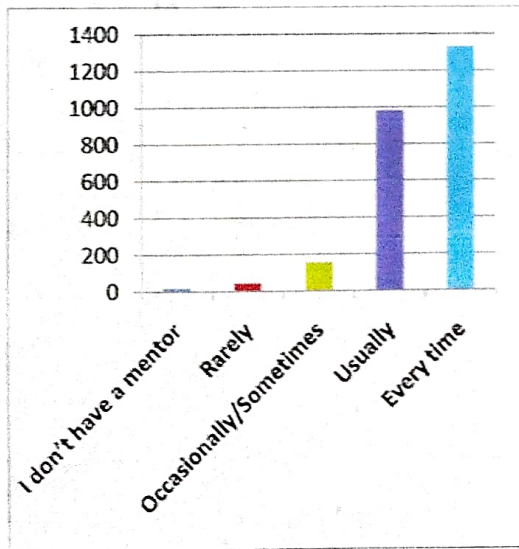
9. The institution provides multiple opportunities to learn and grow.



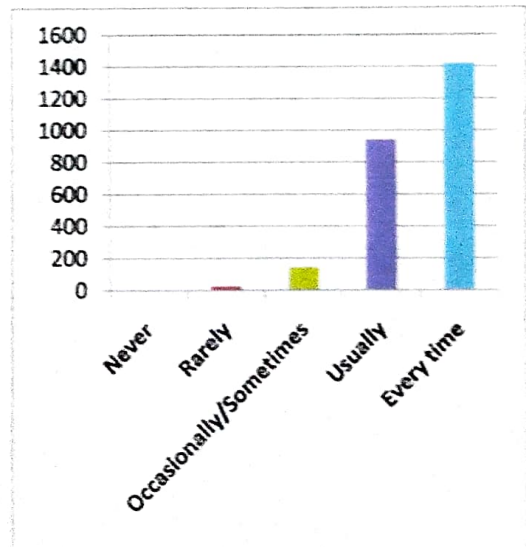
10. Teachers inform you about your expected competencies, course outcomes and programme outcomes.



11. Your mentor does a necessary follow-up throughout with an assigned task to you.



12. The teachers illustrate the concepts through examples and applications.



G. Anura

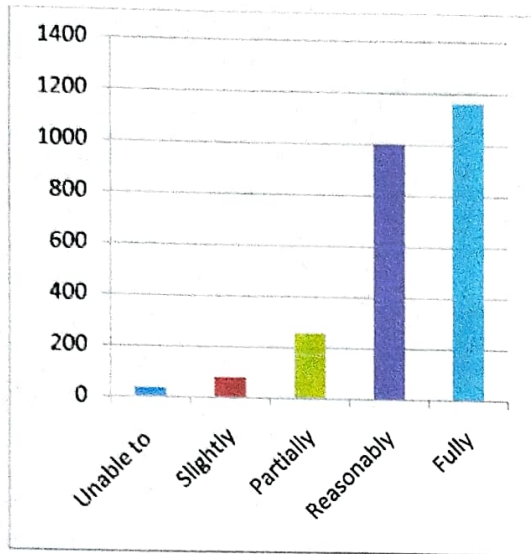
(Dr. G. Annapurna)

Prof. -EEE

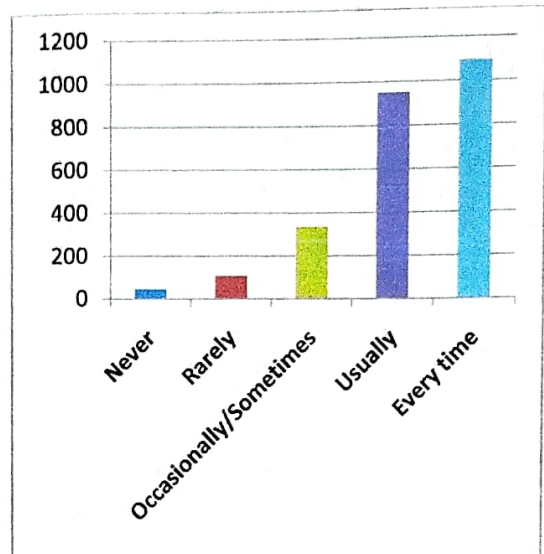
[Signature]
PRINCIPAL

G. Narayanaswami Institute of
Technology & Science (for women)
(AUTON. O.M.D.U.S.)
Shaikpet, Hyderabad - 500 104

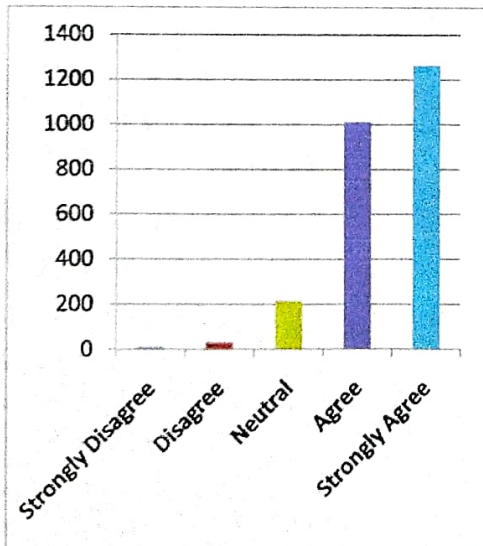
13. The teachers identify your strengths and encourage you with providing right level of challenges.



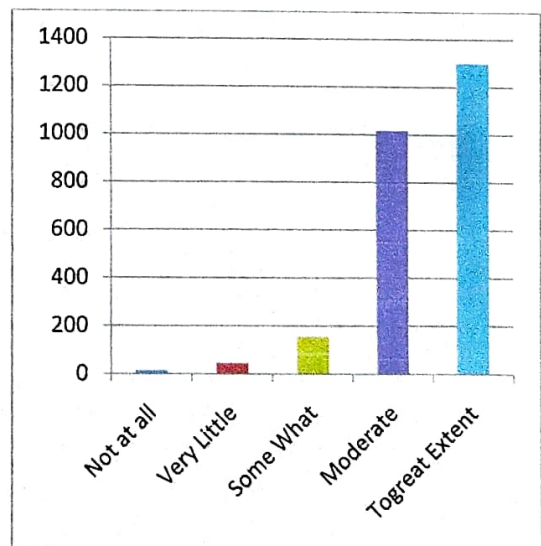
14. Teachers are able to identify your weaknesses and help you to overcome them



15. The institution makes effort to engage students in the monitoring, review and continuous quality improvement of the teaching learning process.



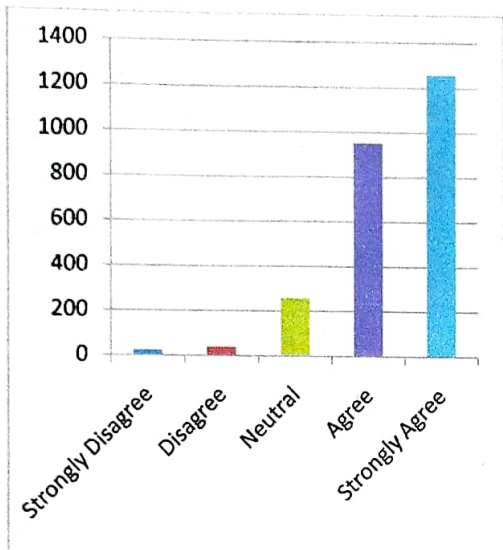
16. The institute/ teachers use student centric methods, such as experiential learning, participative learning and problem solving methodologies for enhancing learning experiences.



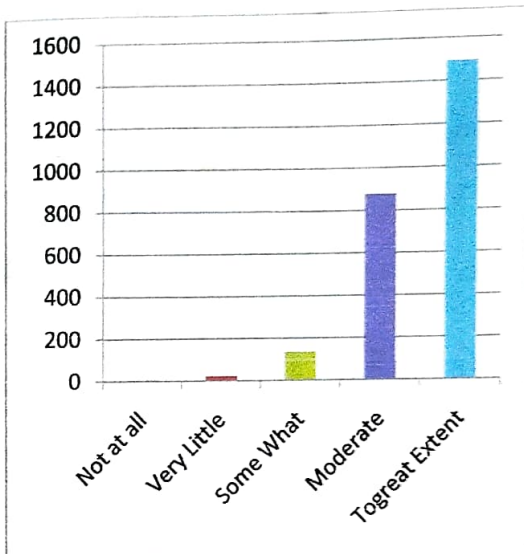
G. Annapurna
 (G. Annapurna)
 Prof - EEE

[Signature]
 PRINCIPAL
 G. Narayanamma Institute of
 Technology & Science (for women)
 (AUTONOMOUS)
 Shaikpet, Hyderabad - 500 104

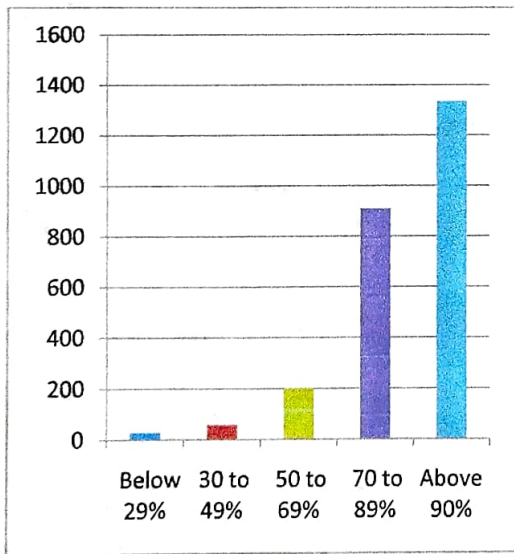
17. Teachers encourage you to participate in extracurricular activities.



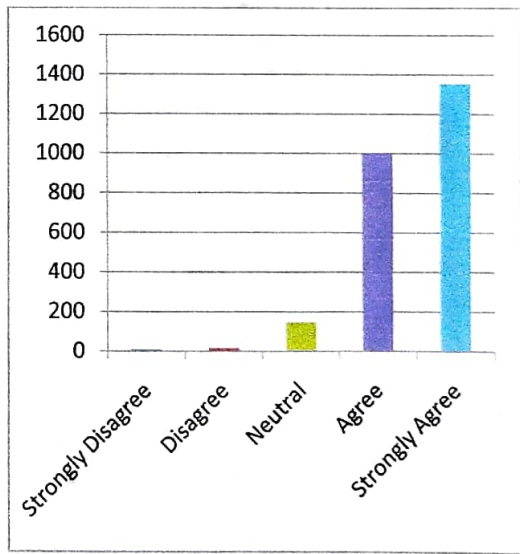
18. Efforts are made by the institute/ teachers to inculcate soft skills, life skills and employability skills to make you ready for the world of work.



19. What percentage of teachers use ICT tools such as LCD projector, Multimedia etc. while teaching.



20. The overall quality of teaching-learning process in your institute is very good.



G. Annapurna

(Dr. G. Annapurna)

Prof. - EEE

[Signature]
PRINCIPAL

G. Narayanamma Institute of
Technology & Science (for women)
(AUTONOMOUS)
Shaikpet, Hyderabad - 500 104

TOTAL RESPONSES FOR STUDENT SATISFACTION SURVEY

1. How much of the syllabus was covered in the class?	No. of Responses	2. How well did the teachers prepare for the classes?	No. of Responses	3. How well were the teachers able to communicate?	No. of Responses	4. The teacher's approach to teaching can best be described as	No. of Responses
Below 30%	18	Indifferently	12	Very poor communication	7	Poor	6
30 to 54%	44	Poorly	33	Generally ineffective	15	Fair	35
55 to 69%	113	Satisfactorily	1262	Just satisfactorily	162	Good	343
70 to 84%	549	Thoroughly	1228	Sometimes effective	878	Very good	1075
85 to 100%	1810			Always effective	1473	Excellent	1076
TOTAL	2535		2535		2535		2535

5. Fairness of the internal evaluation process by the teachers.	No. of Responses	6. Was your performance in assignments discussed with you?	No. of Responses	7. The institute takes active interest in promoting internship, student exchange, field visit opportunities for students.	No. of Responses	8. The teaching and mentoring process in your institution facilitates you in cognitive, social and emotional growth.	No. of Responses
Unfair	8	Never	34	Never	40	Not at all	26
Usually unfair	10	Rarely	79	Rarely	68	Marginally	37
Sometimes unfair	135	Occasionally/Sometimes	255	Sometimes	206	Moderately	255
Usually fair	864	Usually	968	Often	675	Very well	989
Always fair	1518	Every time	1199	Regularly	1546	Significantly	1228
TOTAL	2535		2535		2535		2535

9. The institution provides multiple opportunities to learn and grow.	No. of Responses	10. Teachers inform you about your expected competencies, course outcomes and programme outcomes.	No. of Responses	11. Your mentor does a necessary follow-up with an assigned task to you.	No. of Responses	12. The teachers illustrate the concepts through examples and applications.	No. of Responses
Strongly disagree	9	Never	5	I don't have a mentor	18	Never	3
Disagree	19	Rarely	26	Rarely	46	Rarely	25
Neutral	152	Occasionally/Sometimes	141	Occasionally/Sometimes	157	Occasionally/Sometimes	145
Agree	918	Usually	887	Usually	983	Usually	942
Strongly agree	1437	Every time	1476	Every time	1331	Every time	1420
TOTAL	2535		2535		2535		2535

G. Annapurna
 (Dr G. Annapurna)
 Prof. - EEE

[Signature]
 PRINCIPAL
 G. Narayanamma Institute of
 Technology & Science (for women)
 (AUTONOMOUS)
 Shaikpet, Hyderabad - 500 104.

13. The teachers identify your strengths and encourage you with providing right level of challenges.	No. of Responses	14. Teachers are able to identify your weaknesses and help you to overcome them	No. of Responses	15. The institution makes effort to engage students in the monitoring, review and continuous quality improvement of the teaching learning process.	No. of Responses	16. The institute/ teachers use student centric methods, such as experiential learning, participative learning and problem solving methodologies for enhancing learning experiences.	No. of Responses
Unable to	36	Never	46	Strongly Disagree	12	Not at all	15
Slightly	79	Rarely	109	Disagree	31	Very Little	46
Partially	256	Occasionally/Sometimes	336	Neutral	218	Some What	157
Reasonably	1002	Usually	951	Agree	1011	Moderate	1017
Fully	1162	Every time	1093	Strongly Agree	1263	Togreat Extent	1300
TOTAL	2535		2535		2535		2535

17. Teachers encourage you to participate in extracurricular activities.	No. of Responses	18. Efforts are made by the institute/ teachers to inculcate soft skills, life skills and employability skills to make you ready for the world of work.	No. of Responses	19. What percentage of teachers use ICT tools such as LCD projector, Multimedia, etc. while teaching.	No. of Responses	20. The overall quality of teaching-learning process in your institute is very good.	No. of Responses
Strongly Disagree	25	Not at all	6	Below 29%	29	Strongly Disagree	10
Disagree	40	Very Little	23	30 to 49%	59	Disagree	18
Neutral	260	Some What	136	50 to 69%	203	Neutral	148
Agree	953	Moderate	878	70 to 89%	909	Agree	1005
Strongly Agree	1257	Togreat Extent	1492	Above 90%	1335	Strongly Agree	1354
TOTAL	2535		2535		2535		2535

G. Annapurna
 (Dr G. Annapurna)
 Prof. - EEE

[Signature]
 PRINCIPAL
 G. Narayanaswami Institute of
 Technology & Science (for women)
 (AUTONOMOUS)
 Shaikpet, Hyderabad - 500 104