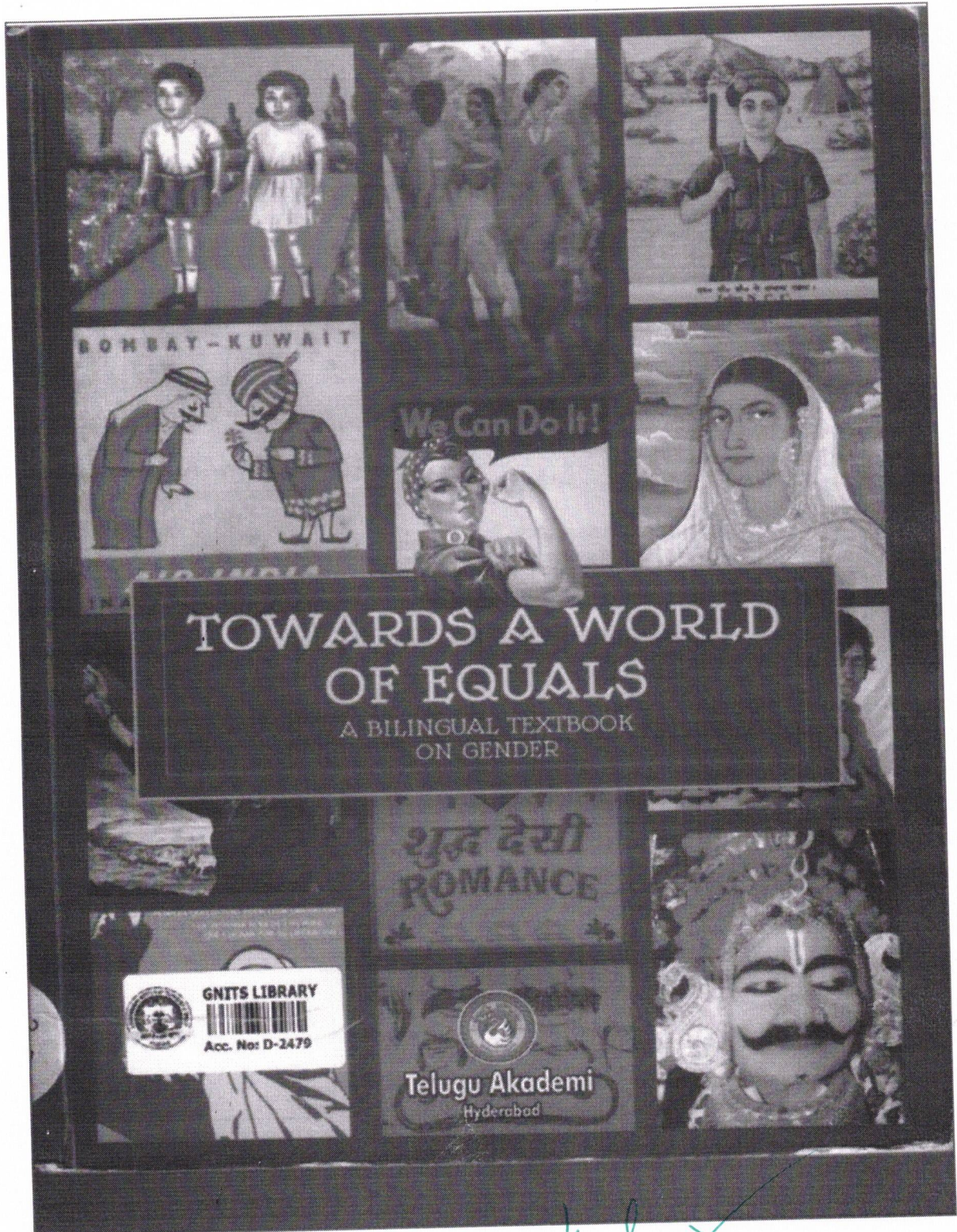


Towards the World of Equals

A mandatory course on Gender Sensitization is offered with 2 hours of lecture hours and no credits to the students during their first year. A textbook titled: **Towards the World of Equals** is prescribed for the students. The books cover a wide range of topics discussed, debated and presented in a classroom environment. The objective of the course is to sensitize the students on Gender issues pertaining to all the genders.



[Signature]
PRINCIPAL
G. Narayanamma Institute of
Technology & Science (for woman)
(AUTONOMOUS)
Shaikpet, Hyderabad - 500 104

CONTENTS

Acknowledgements

Preface by Rama Melkote

1 Gender: Why Should We Study It?	1
2 Socialization: Making Women, Making Men	7
2.1 Introduction	7
2.2 Preparing for womanhood	10
2.3 Growing up male	14
2.4 First lessons in caste	18
2.5 Different masculinities	21
3 Housework: The Invisible Labour	40
3.1 "My mother does not work"	40
3.2 "Share the load"	44
4 Missing Women: Sex Selection and Its Consequences	56
4.1 Declining sex ratio	56
4.2 Demographic consequences	59
5 Knowledge: Through the Lens of Gender	67
5.1 Point of view	67
5.2 Gender and the structure of knowledge	70
5.3 Further reading: Unacknowledged women artists of Telangana	75
6 Sexual Harassment: Say No!	90
6.1 Sexual harassment, not eve-teasing	90
6.2 Coping with everyday harassment	94
6.3 Further reading: "Chupulu"	98
7 Women's Work: Its Politics and Economics	108
7.1 Fact and fiction	108
7.2 Unrecognized and unaccounted work	111
7.3 Further reading: Wages and conditions of work	113


PRINCIPAL

G. Narayanamma Institute of
Technology & Science (for woman)
(AUTONOMOUS)
Shaikpet, Hyderabad - 500 104

8 Domestic Violence: Speaking Out	124
8.1 Is home a safe place?	124
8.2 When women unite [Film]	129
8.3 Rebuilding lives	130
8.4 Further reading: New forums for justice	134
9 Whose History? Questions for Historians and Others	145
9.1 Reclaiming a past	145
9.2 Writing other histories	148
9.3 Further reading: Missing pages from modern Telangana history	152
10 Gender Spectrum: Beyond the Binary	177
10.1 Two or many?	177
10.2 Struggles with discrimination	181
11 Thinking about Sexual Violence	196
11.1 Blaming the victim	196
11.2 "I fought for my life..."	199
11.3 Further reading: The caste face of violence	203
12 Just Relationships: Being Together as Equals	212
12.1 Mary Kom and Onler	212
12.2 Love and acid just do not mix	217
12.3 Love letters	220
12.4 Mothers and fathers	223
12.5 Further Reading: Rosa Parks—The braveheart	227
13 Additional Reading: Our Bodies, Our Health	242
Sources	266

Course website: www.worldofequals.org.in
Contact Email: courseadviser@worldofequals.org.in




PRINCIPAL
G. Narayanamma Institute of
Technology & Science (for women)
(AUTONOMOUS)
Shaikpet, Hyderabad - 500 104

విషయసూచిక

కృతజ్ఞతలు

వీడియో రమా మెలోడీ

1	ఇందర్: దీని గురించి అధ్యయనం చేయాల్సిన అవకాశక	4
2	సాంఘికీకరణ: స్త్రీలనీ, పురుషులనీ తయారు చెయ్యడం	25
2.1	పరిచయం	25
2.2	స్త్రీత్వం కోసం శిక్షణ	28
2.3	పురుషుడిగా ఎదగటం	31
2.4	కుల వివక్షలో మొదటి పాఠం	34
2.5	విభిన్న పురుషత్వాలు	37
3	ఇంటి పని: కనిపించని క్రమ	49
3.1	"మా అమ్మ పని చేయదు"	49
3.2	"పనులని పంచుకుందాం"	52
4	అభ్యుత్పన్నైన స్త్రీలు : మగ శిశువుల ఎంపిక, దాని పర్యవసానాలు	62
4.1	విషమిస్తున్న లింగ నిష్పత్తి	62
4.2	ఇందర్ అసమతుల్యత వల్ల కలిగే దుష్పరిణామాలు	65
5	ఇందర్ ధృష్టి కోణం నుండి జ్ఞాన రంగాల పరిశీలన	79
5.1	ధృష్టి కోణం	79
5.2	ఇందర్, జ్ఞాన రంగాల స్వరూప, స్వభావాలు	82
5.3	అదనపు పఠనం: మనం మరిచిన తెలంగాణా కళాకారులు	86
6	లైంగిక వేధింపులకి స్పృష్టి చెప్పడాం!	99
6.1	ఇవి వేధింపులు, సరదా కాదు	99
6.2	వేధింపులను ఎదుర్కోవటం ఎలా	103
6.3	అదనపు పఠనం: "చూపులు"	107
7	స్త్రీల క్రమ: దాని వెనకనున్న రాజకీయ, ఆర్థిక అంశాలు	116
7.1	నిత్యాలు, కట్టు కథలు	116
7.2	గుర్తింపులేనిది, లెక్క లోనికి రానిది	119
7.3	అదనపు పఠనం: జీతాలు, పని ప్రదేశాల్లో పరిస్థితులు	121
8	కుటుంబ హింస: నిశ్చల్యాన్ని చేదిద్దాం!	135
8.1	'ఇల్లు' సురక్షితమేనా?	135
8.2	అదనపు ఏకపైతే (సినీమా)	139
8.3	కొత్త జీవితాలవైపు	140
8.4	"అదనపు పఠనం": న్యాయానికి కొత్త వేదికలు	144


PRINCIPAL
 G. Narayanamma Institute of
 Technology & Science (for woman)
 (AUTONOMOUS)
 Shaikpet, Hyderabad - 500 104

9. ఎవరిదీ చరిత్ర? చరిత్రకారులకి, మేధావులకి కొన్ని ప్రశ్నలు	162
9.1 మన గతాన్ని తిరిగి సొంతం చేసుకుందాం	162
9.2 నవ చరిత్రల రచన	165
9.3 అదనపు పఠనం: ఆధునిక తెలంగాణ చరిత్రలో మరుగుపడిన కొన్ని పేజీలు	168
10 అందర్ ఒక స్పెక్ట్రమ్: స్త్రీ పురుష భ్యయమే కాదు...	187
10.1 అదా, మగా, ఇంకా...	187
10.2 వివక్షకో సంఘర్షణ	191
11 లైంగిక హింస గురించి ఇకనైనా ఆలోచిద్దాం	205
11.1 బాధితులపైనే బందలా?	205
11.2 "బ్రతకటానికి పోరాడాను..."	207
11.3 అదనపు పఠనం: హింసకు కూడా కులం ఉంటుంది	211
12 నమ సంబంధాలు: సహజీవనంలో సమాసత్వం	228
12.1 ఒక బాక్సర్ ప్రేమ కథ	228
12.2 ప్రేమా, యాసిడ్ ఎప్పుటికీ కలనపు	232
12.3 ప్రేమ లేఖలు	234
12.4 అమ్మలు, నాన్నలు	237
12.5 అదనపు పఠనం: జాత్యహంకారాన్ని ఎదిరించిన వీరవనిక రోసాపార్థ	241
13 అదనపు పఠనం: మన తరీఖలు, మన ఆరోగ్యం	254

కోర్సు వెబ్సైట్: www.worldofequals.org.in

కాంటాక్ట్ ఇమెయిల్: courseadviser@worldofequals.org.in



PRINCIPAL
G. Narayanamma Institute of
Technology & Science (for woman)
(AUTONOMOUS)
Shaikpet, Hyderabad - 500 104

2018-2019

89

II Year B.Tech. IT I-Semester
Course Code: MC11317

L T P C
2 - - -

GENDER SENSITIZATION
(Mandatory Course)
(Common to EEE, ECE, CSE, IT & ETE)

Prerequisites:-Nil-

Course Objectives:

1. To develop students' sensibility with regard to issues of gender in contemporary India.
2. To provide a critical perspective on the socialization of men and women.
3. To introduce students to information about some key biological aspects of genders.
4. To expose the students to debates on the politics and economics of work.
5. To help students reflect critically on gender violence.
6. To expose students to more egalitarian interactions between men and women.

UNIT 1: (~6 Lecture Hours)

Understanding Gender:

Gender: Why Should We Study It? (Towards a World of Equals: Unit -1)
Socialization: Making Women, Making Men (Towards a World of Equals: Unit-2) Introduction, Preparing for Womanhood, Growing up Male, First lessons in Caste, Different Masculinities.

UNIT 2: (~6 Lecture Hours)

Gender and Biology:

Missing Women: Sex Selection and Its Consequences (Towards a World of Equals: Unit -4) Declining Sex Ratio. Demographic Consequences.
Gender Spectrum : Beyond the Binary (Towards a World of Equals: Unit -10) Two or Many? Struggles with Discrimination.

UNIT 3: (~7 Lecture Hours)

Gender And Labour:

Housework: The Invisible Labour (Towards a World of Equals: Unit -3) "My Mother doesn't Work." "Share the Load."


Women's Work: Its Politics and Economics (Towards a World of Equals: Unit -7) Fact and Fiction. Unrecognized and Unaccounted work. Additional Reading: Wages and Conditions of Work.



PRINCIPAL

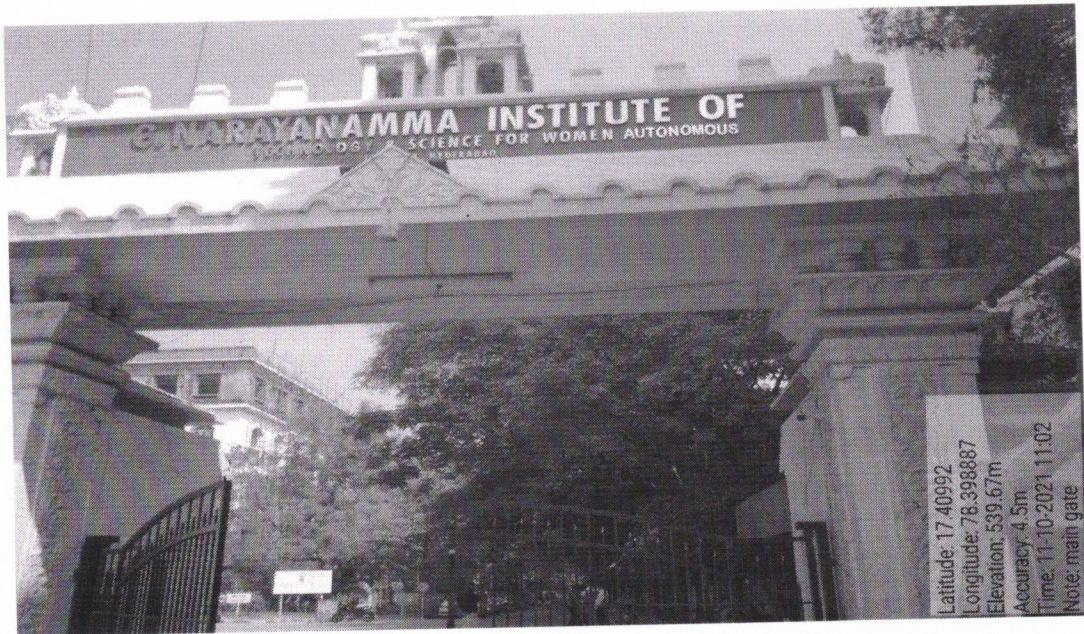
G. Narayanamma Institute of
Technology & Science (for woman)
(AUTONOMOUS)
Shaikpet, Hyderabad - 500 104

2. Students will attain a finer grasp of how gender discrimination works in our society and how to counter it.
3. Students will acquire insight into the gendered division of labour and its relation to politics and economics.
4. Men and women students and professionals will be better equipped to work and live together as equals.
5. Students will develop a sense of appreciation of women in all walks of life.
6. Through providing accounts of studies and movements as well as the new laws that provide protection and relief to women, the textbook will empower students to understand and respond to gender violence.


PRINCIPAL
G. Narayanamma Institute of
Technology & Science (for woman)
(AUTONOMOUS)
Shaikpet, Hyderabad - 500 104


7.1.1. Promotion of Gender Equity

7.1.1.1. Safety and Security - Security at Main Gate



7.1.1.1. Safety and Security – CC Cameras at Admin Block




PRINCIPAL
G. Narayanamma Institute of
Technology & Science (for woman)
(AUTONOMOUS)
Shaikpet, Hyderabad - 500 104

7.1.1.1. Safety and Security – CC Cameras at Admin Block



7.1.1.1. Safety and Security – CC Cameras at Open Auditorium



Handwritten signature

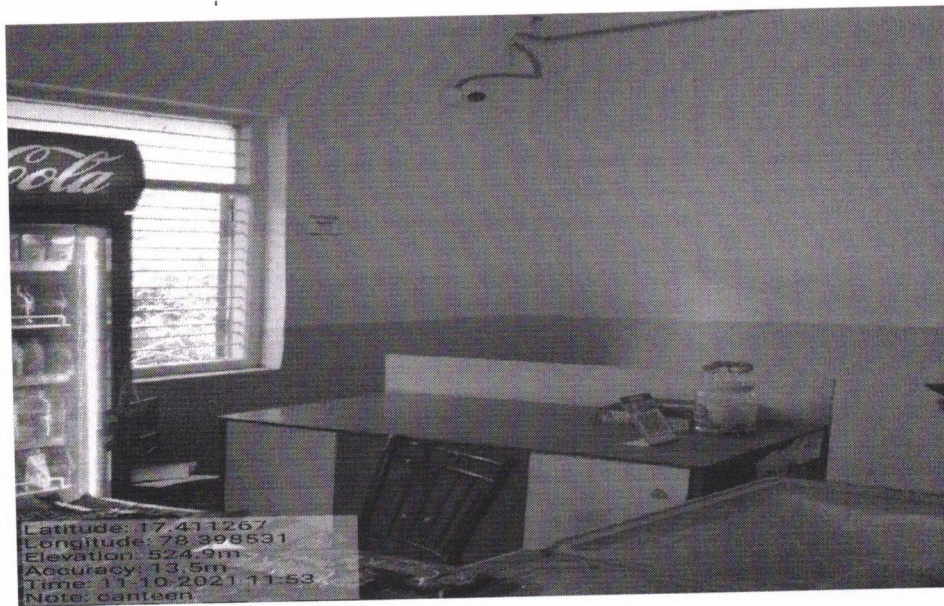
PRINCIPAL


G. Narayanamma Institute of
Technology & Science (for woman)
(AUTONOMOUS)
Shaikpet, Hyderabad - 500 104

7.1.1.1. Safety and Security – CC Cameras at Library Entrance



7.1.1.1. Safety and Security – CC Cameras at Cafeteria

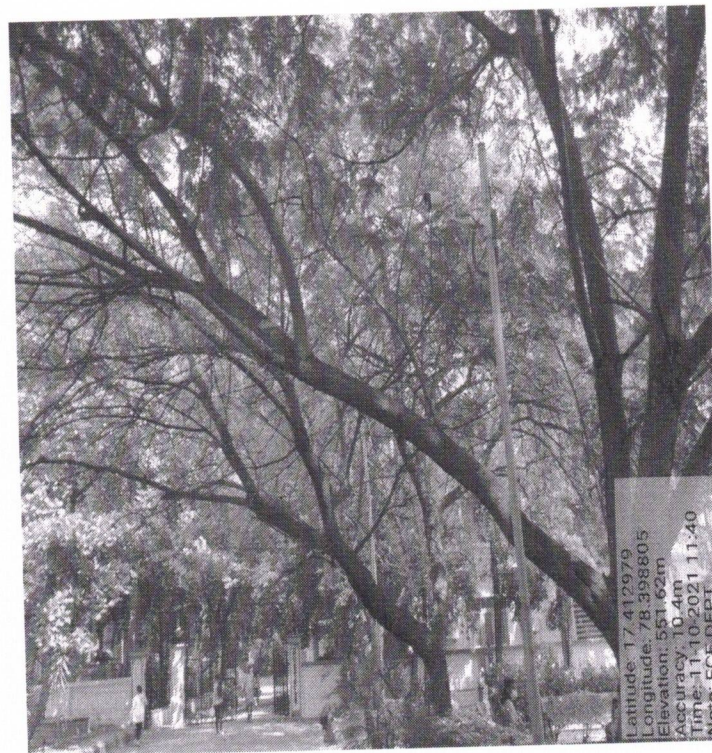




PRINCIPAL
G. Narayanamma Institute of
Technology & Science (for woman)
(AUTONOMOUS)
Shaikpet, Hyderabad - 500 104

7.1.1.1. Safety and Security – CC Cameras at Admin Rare Side

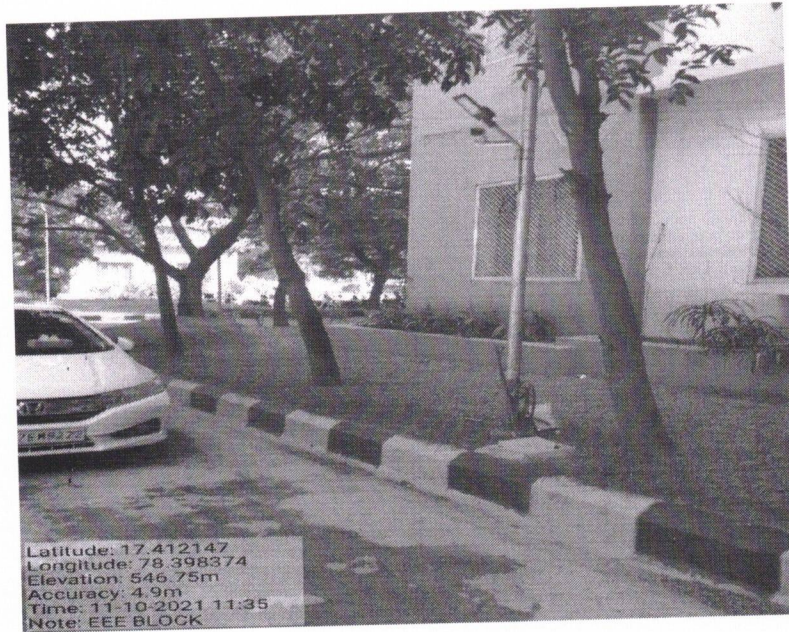


7.1.1.1. Safety and Security – CC Cameras at ECE Dept





PRINCIPAL
G. Narayanamma Institute of
Technology & Science (for woman)
(AUTONOMOUS)
Shaikpet, Hyderabad - 500 104

7.1.1.1. Safety and Security – CC Cameras at EEE Block



7.1.1.1. Safety and Security – CC Cameras at CSE Entrance

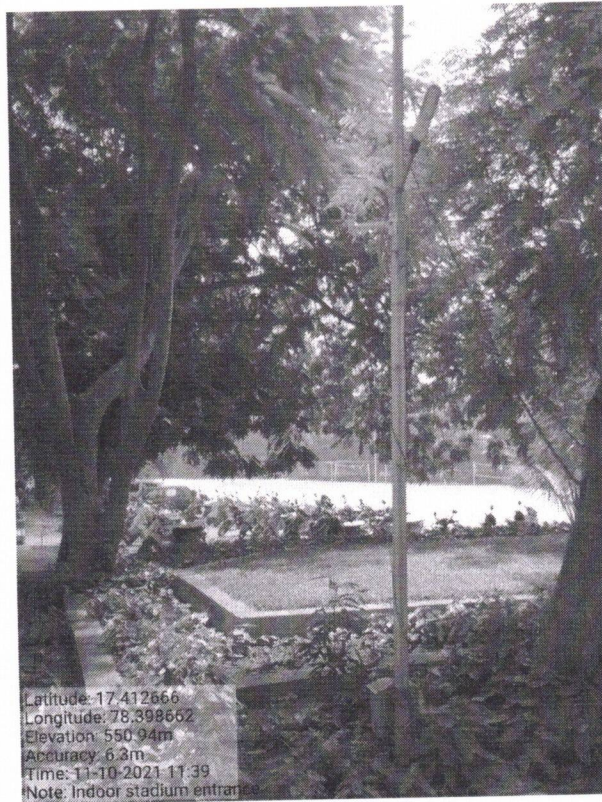


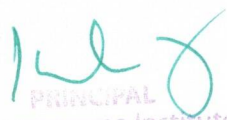

PRINCIPAL
G. Narayanamma Institute of
Technology & Science (for women)
(AUTONOMOUS)
Shaikpet, Hyderabad - 500 104

7.1.1.1. Safety and Security – CC Cameras at Physical Education

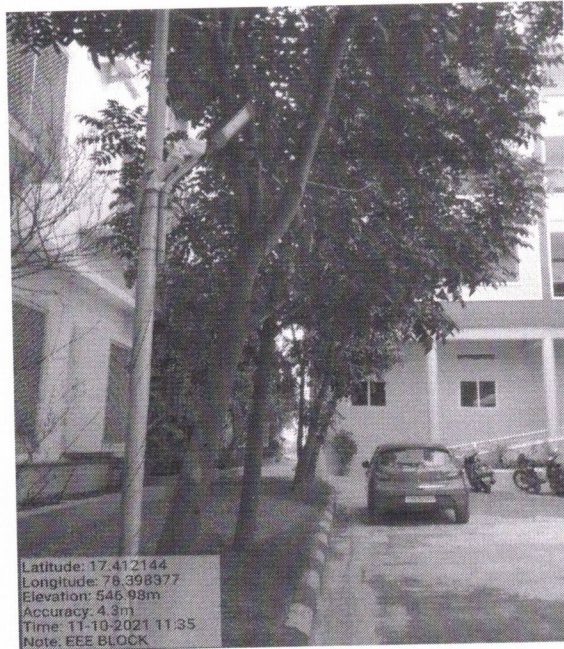


7.1.1.1. Safety and Security – CC Cameras at Indoor Stadium





PRINCIPAL
G. Narayanamma Institute of
Technology & Science (for women)
(AUTONOMOUS)
Shaikpet, Hyderabad - 500 104

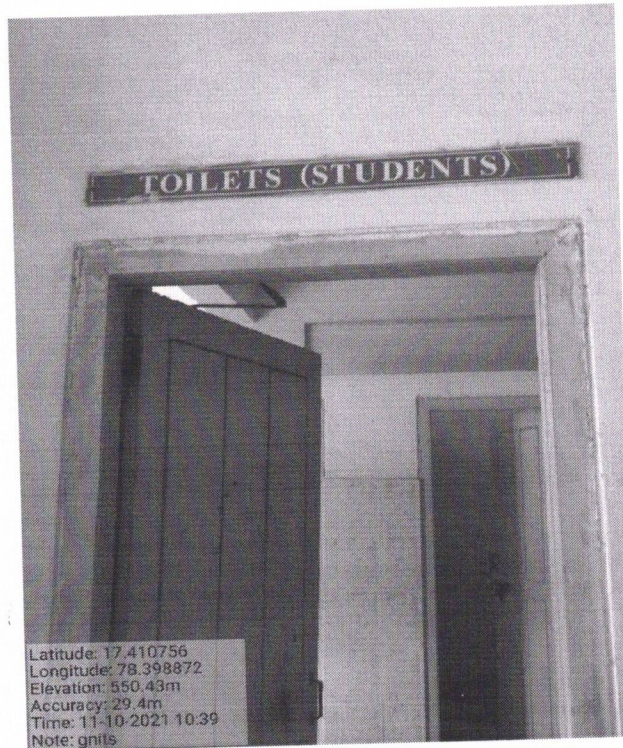
7.1.1.1. Safety and Security – CC Cameras at EEE Block



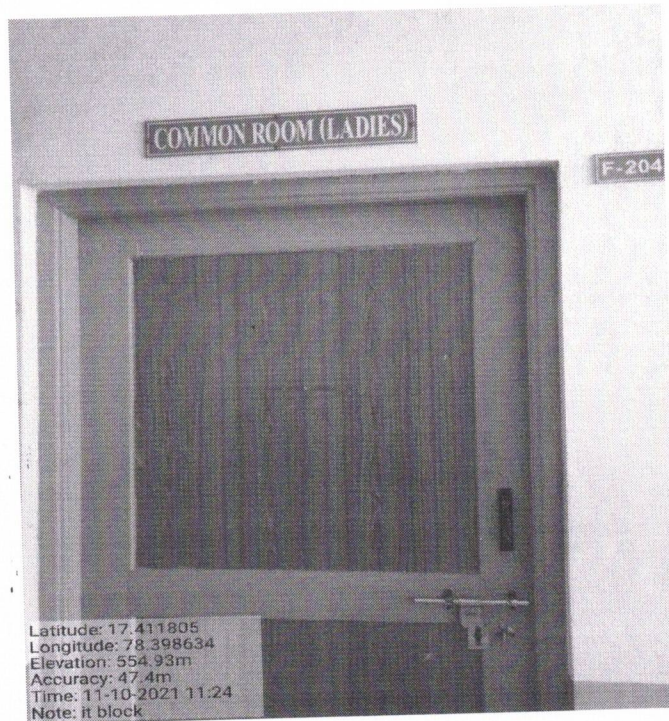
7.1.1.2. Counselling


PRINCIPAL
G. Narayanamma Institute of
Technology & Science (for woman)
(AUTONOMOUS)
Shaikpet, Hyderabad - 500 104

7.1.1.3. Common Rooms at Admin Block



7.1.1.3. Common Rooms at F- Block / IT Block

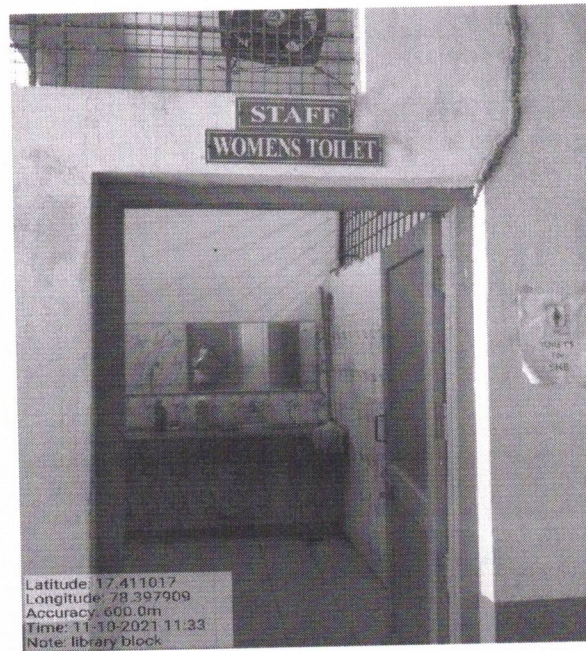


[Handwritten Signature]
PRINCIPAL
G. Narayanamma Institute of
Technology & Science (for woman)
(AUTONOMOUS)
Shaikpet, Hyderabad - 500 104

7.1.1.3. Common Rooms at ECE Dept.

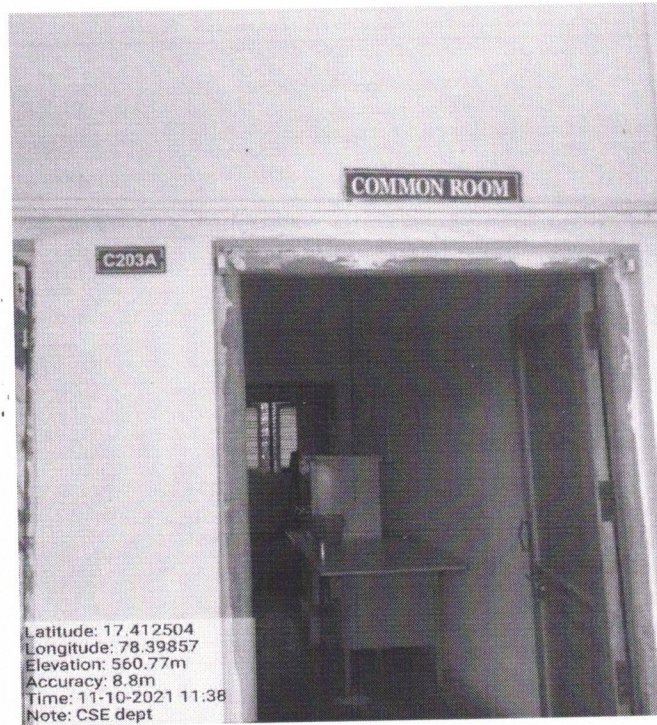


7.1.1.3. Common Rooms at Library

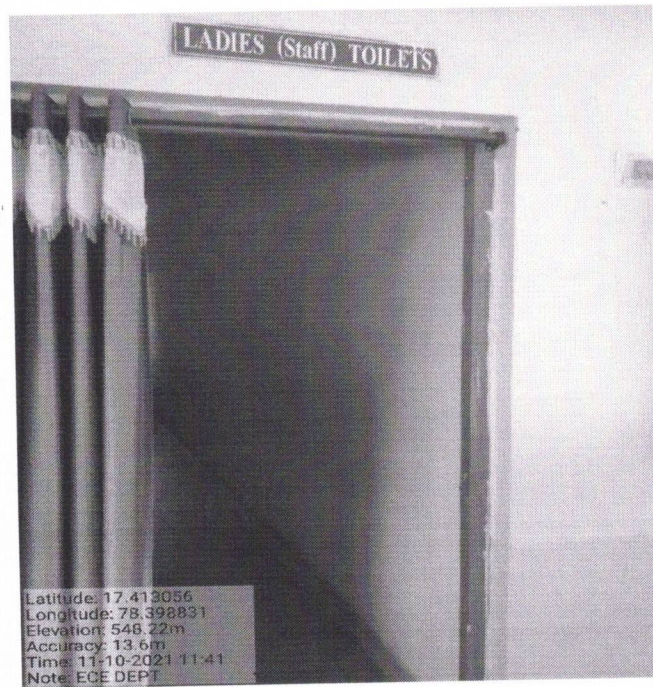


Principal
PRINCIPAL
G. Narayanamma Institute of
Technology & Science (for women)
(AUTONOMOUS)
Shaikpet, Hyderabad - 500 104

7.1.1.3. Common Rooms at CSE Dept.



7.1.1.3. Common Rooms at ECE Dept.



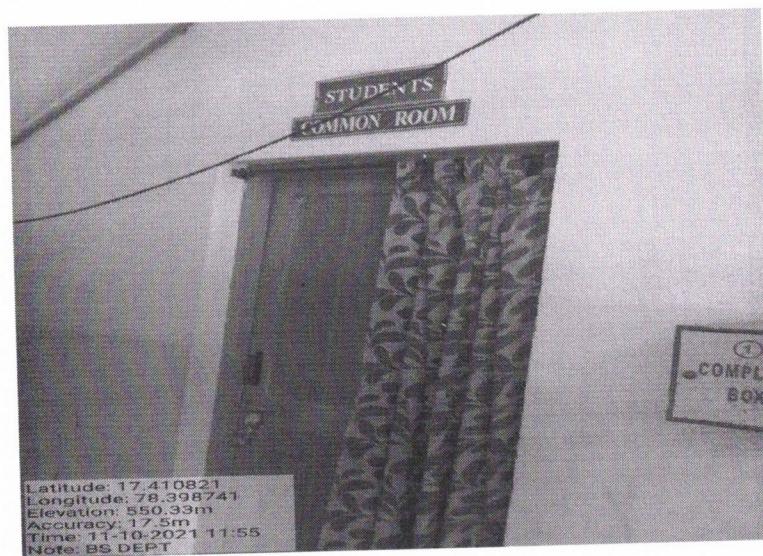

PRINCIPAL


G. Narayanamma Institute of
Technology & Science (for woman)
(AUTONOMOUS)
Shaikpet, Hyderabad - 500 104

7.1.1.3. Common Rooms at H & M Dept.



7.1.1.3. Common Rooms at BS Dept.




PRINCIPAL
G. Narayanamma Institute of
Technology & Science (for women)
(AUTONOMOUS)
Shaikpet, Hyderabad - 500 104