

**G.NARAYANAMMA INSTITUTE OF TECHNOLOGY AND SCIENCE  
(AUTONOMOUS) (FOR WOMEN)**



## **Slow and Advanced Learners Policy**

REGISTERED OFFICE

**GNITS,**

Shaikpet, Hyderabad - 500 104, Telangana State

Website [www.alumnae.gnits.ac.in](http://www.alumnae.gnits.ac.in)

Email [gnits.alumnae@gnits.ac.in](mailto:gnits.alumnae@gnits.ac.in)



## **1. Introduction:**

This policy is recognized as the “Slow and Advanced Learners Policy” of GNITS. This policy reflects the institution's commitment to provide essential support and encouragement to advanced learners, fostering their excellence and assisting slow learners in enhancing their academic and personal performance. It offers clear guidelines for teachers to identify and implement effective strategies for the development of both Slow and Advanced Learners, ensuring a comprehensive and inclusive educational environment.

## **2. Objectives**

The purpose of assessment of the learning levels of the students and conduction of activities for them is.

- To Identify the slow learners and advanced learners in the class
- To implement an action plan for slow and advanced learners with the purpose of establishing career targets.
- To enhance the learning levels of slow and advanced learners.

## **3. Identifying Slow and Advanced Learners**

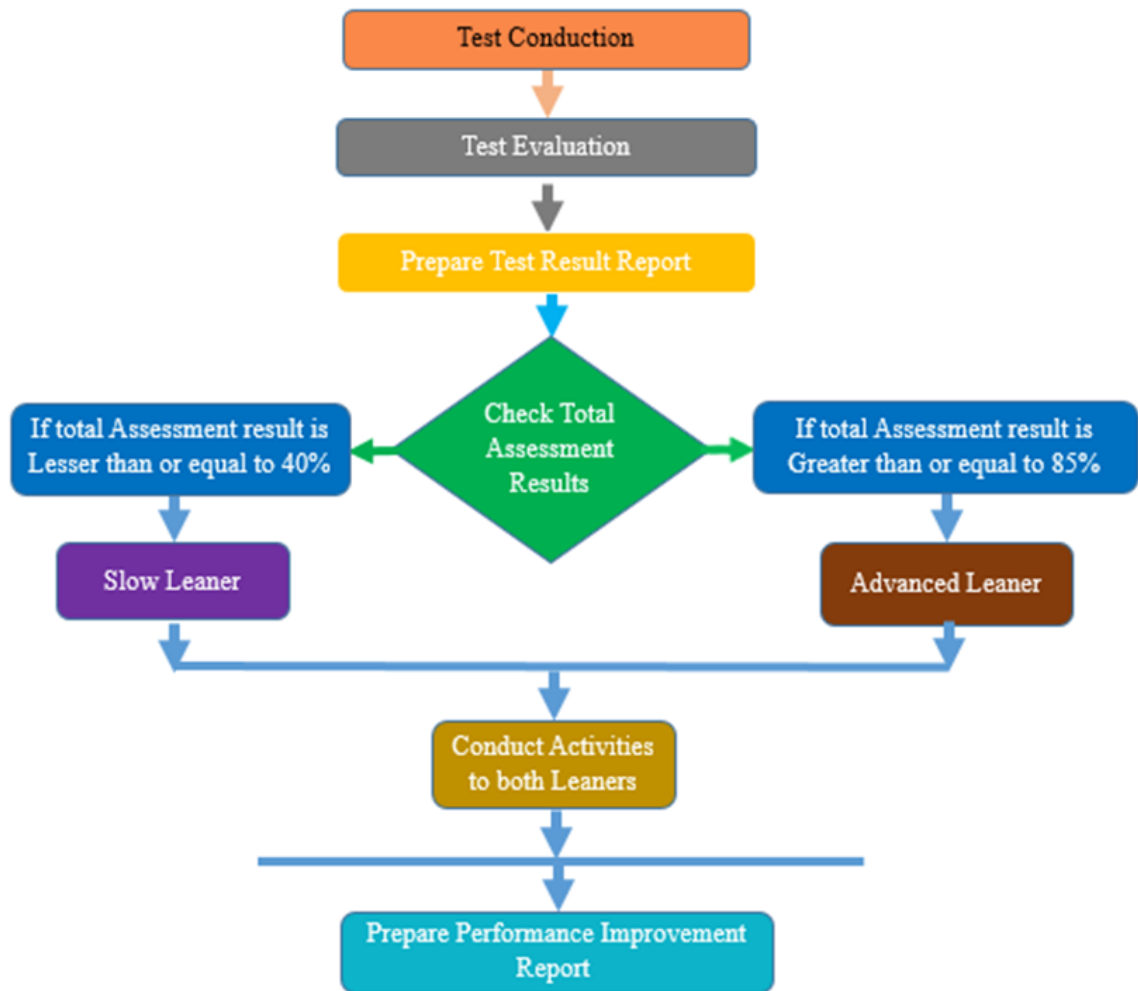
GNITS offers admissions to students based on AICTE/TS-Govt./JNTUH norms under the convener quota (70%) and Category-B (30%). The students taking admission into this college are from diverse social, cultural, economic and linguistic backgrounds with varied levels of knowledge, aptitudes and skills making their learning needs uniquely differential, hence their learning capabilities are different.

Upon students admission, an Induction program is conducted to orient the students towards professional courses/ communication. Continuous Internal Assessment components like Class Tests, Assignments, Quizzes, Projects, Seminars, Poster Presentations, Group Discussions, Analytical Reviews, Presentations and Internships help assess the learning levels of the students to identify slow and advanced learners.

The students are classified as slow learners and advanced learners as given below:

- Slow Learners (less than or equal to 40% in Mid1 marks)
- Advanced Learners (85% of Mid1 and above)

In continuous Internal Assessment (Labs), less than or equal to 12 out of 30 marks is considered as weak student and more than or equal to 25 out of 30 marks is considered as advanced learner. For R22, less than or equal to 14 out of 35 in mid1, less than or equal to 8 out of 20 in labs (continuous internal evaluation) is considered as slow learner. Similarly more than or equal to 30 out of 35 in mid1, more than or equal to 17 out of 20 in labs (continuous internal evaluation) is considered as advanced learners.



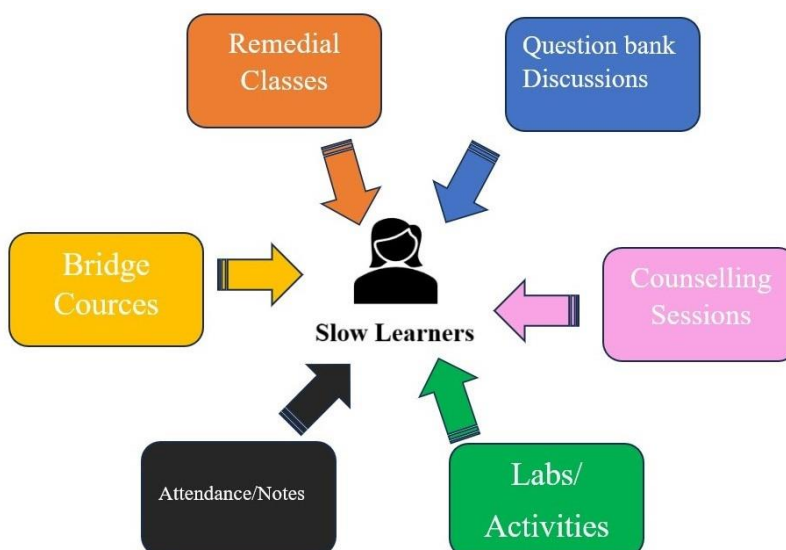
Process of Slow and Advanced Learners

**a) Special Programs for Slow Learners**

Special programs for slow learners are designed to provide targeted support to enhance their academic performance and overall learning experience. Some key components of such programs include:

1. **Conduction of Remedial classes:** Remedial classes are conducted to assist students in understanding the subject thoroughly and to bring the students on par with their peers in the class.
2. **Clarification of doubts:** Clarifying doubts for slow learners is a crucial aspect of supporting their academic progress.
3. **Comprehensive Academic Resources:** Provide unit wise question bank, Assignments and solving question papers.

4. **Regular follow up:** Class teachers follow up with students who have less attendance. The class notes and previous question papers are shared with students and guidance given to boost the confidence of students mentoring.
5. **Counselling Sessions:** Assist students in their weak areas of performance and suggest improvements and provide short and specific direction to students to bring them to level of active learners.
6. **Bridge Courses:** Bridge courses are designed for students to fill the gaps in their foundational knowledge.
7. **Labs/Activities:** The viva about the topic/experiment/slip test decides the earning levels. If the score is poor as above, make them to re do the experiment/activity/execute algorithm /make the model as per specifications again.
8. **Re imposition:** students are asked to write answers for the mid1 question paper again b them to understand where they made mistake.

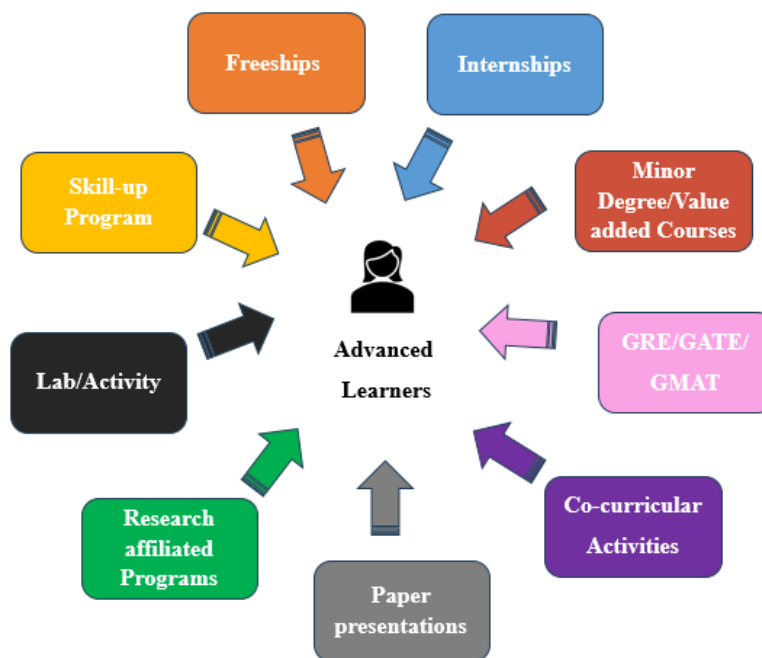


## b) Special Programs for Advanced Learners

Special programs for advanced learners are designed to meet the unique needs of students who excel academically and require additional challenges to maximize their potential. Some key components of special programs for advanced learners include:

1. **Skill-Up Program (Edyst):** A specially designed employability course to achieve high impact jobs.
2. **Freeships:** For academic toppers, attendance toppers, best placement pay package students, gold medal winners, Young Engineer award, toppers in competitive Exams, higher studies, projects.

3. **Internships** –Students are guided to take up Internships in various Industries/fields in order to gain practical knowledge, develop skills, and gain exposure to a particular industry or field of work.
4. **Minor Degree/LITE/Value Added Courses:** Students are encouraged to take up minor degree/LITE(AICTE) programs to expose to the diversified/technical knowledge for industry readiness. And also encourage the students to take Value Added Courses to score additional credits upon completion of these courses.
5. **GRE/GATE/GMAT:** Career counselling will be given and support is provided.
6. **Certifications:** Certifications play a crucial role in showcasing an student's expertise and knowledge in a specific areas like NPTEL-Swayam and also depending on the field or industry, various certifications are available.
7. **Co-curricular activities:** Encouraging the students to participate in co-curricular activities like workshops, conferences, national and international competitions like Hackathons to foster creativity, problem-solving skills and teamwork.
8. **Paper Presentations:** Advanced learners are encouraged to engage in research and innovation work. They will be provided with references to journals and advanced study material. Faculty mentors are assigned to enterprising students who guide them in writing and publishing research papers/provide guidance for innovation/entrepreneurship.
9. **Research affiliated Program:** Collaborative research training with top class institutions for the advanced learners to explore their talents.
10. **Lab /Activity:** If the performance in viva/slip test in lab is in the range of 17 and above for 20 marks of day to day evaluation and additional applicative experiment /concept/Algorithm/model is assigned to encourage advanced learners.



Specialized academic clubs are set up by all UG Departments that offer a platform for students to explore beyond classroom learning and participate in projects.